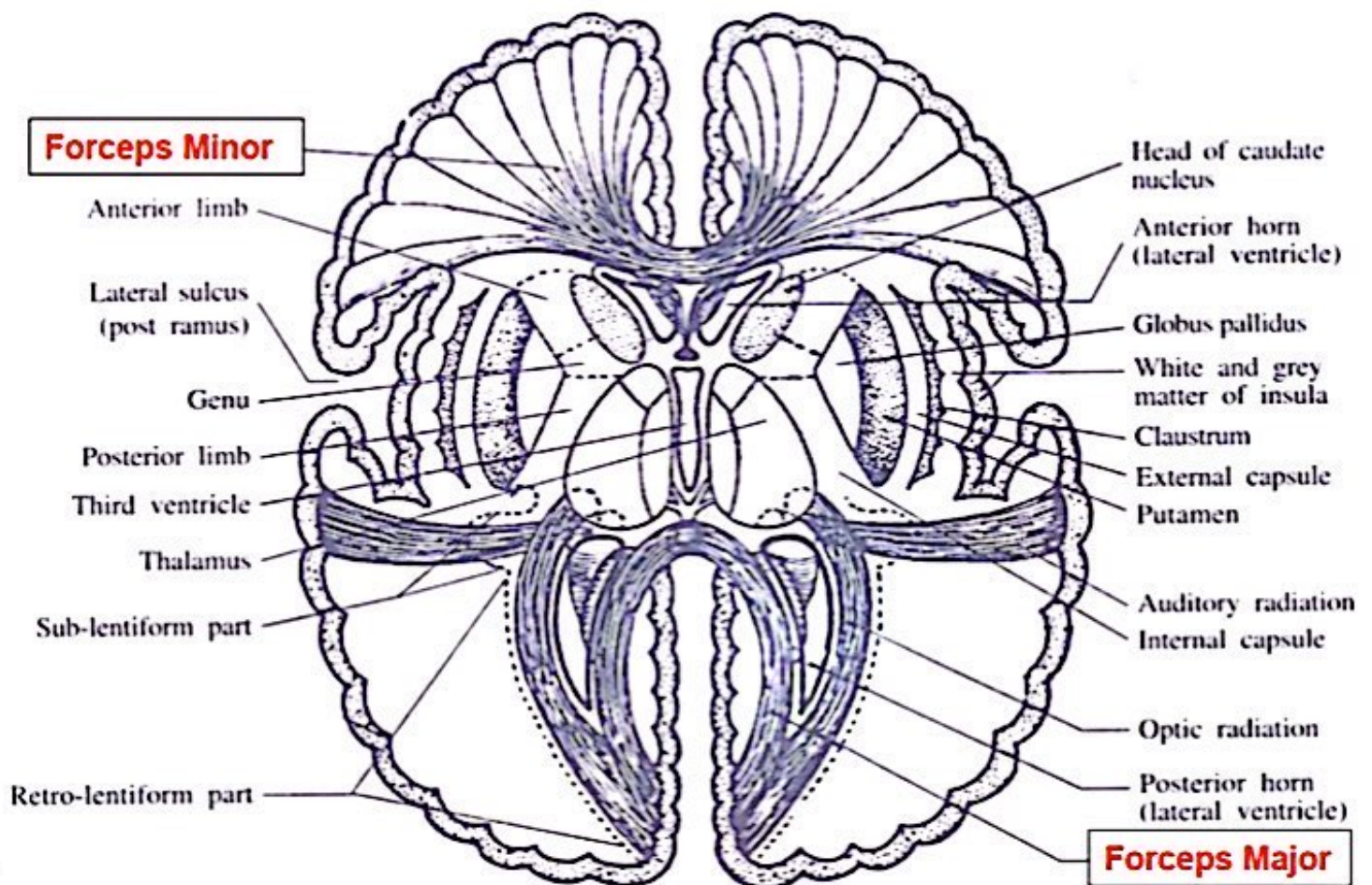
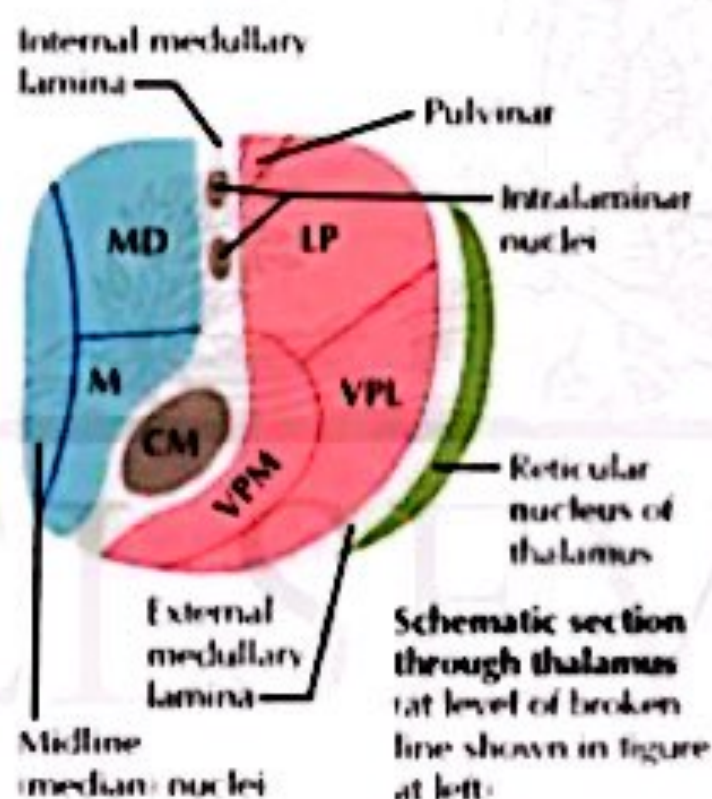
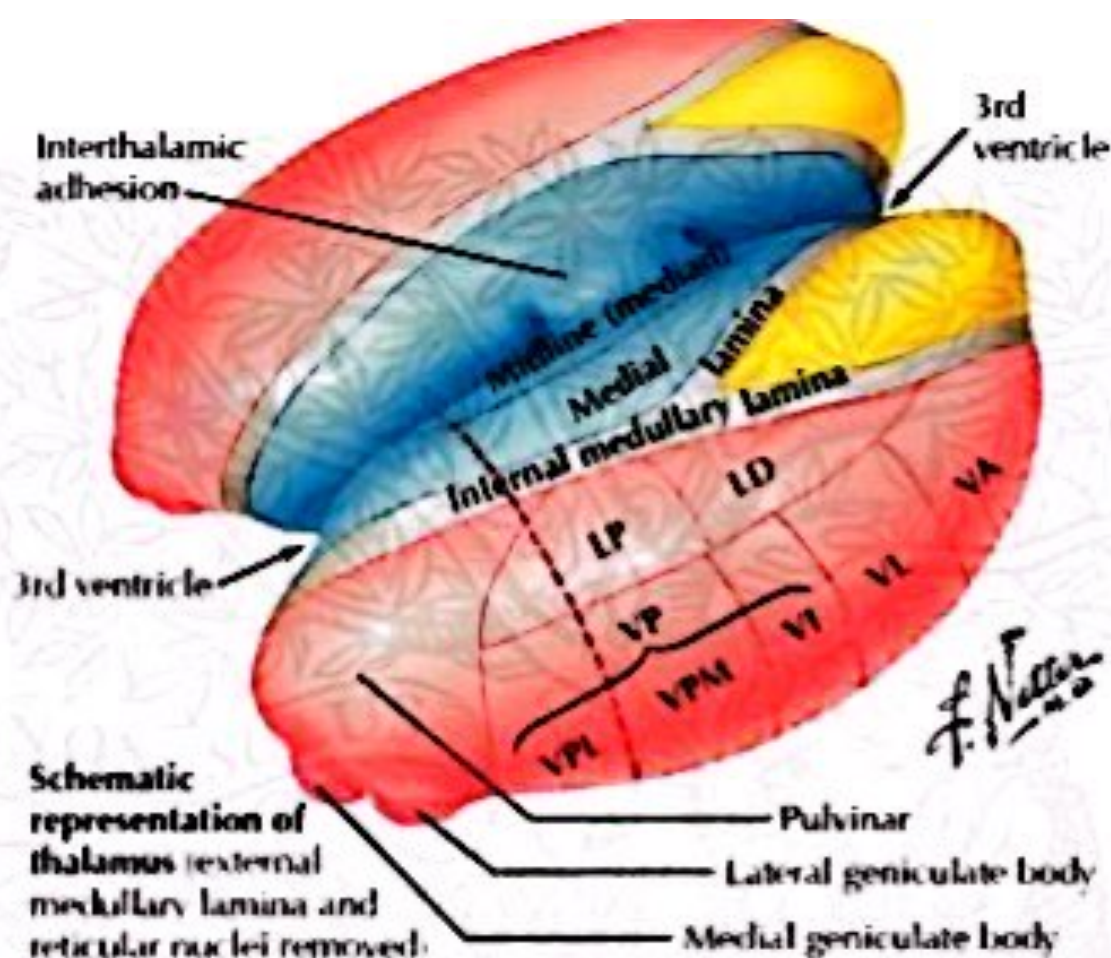


## CORPUS CALLOSUM





#### Thalamic nuclei

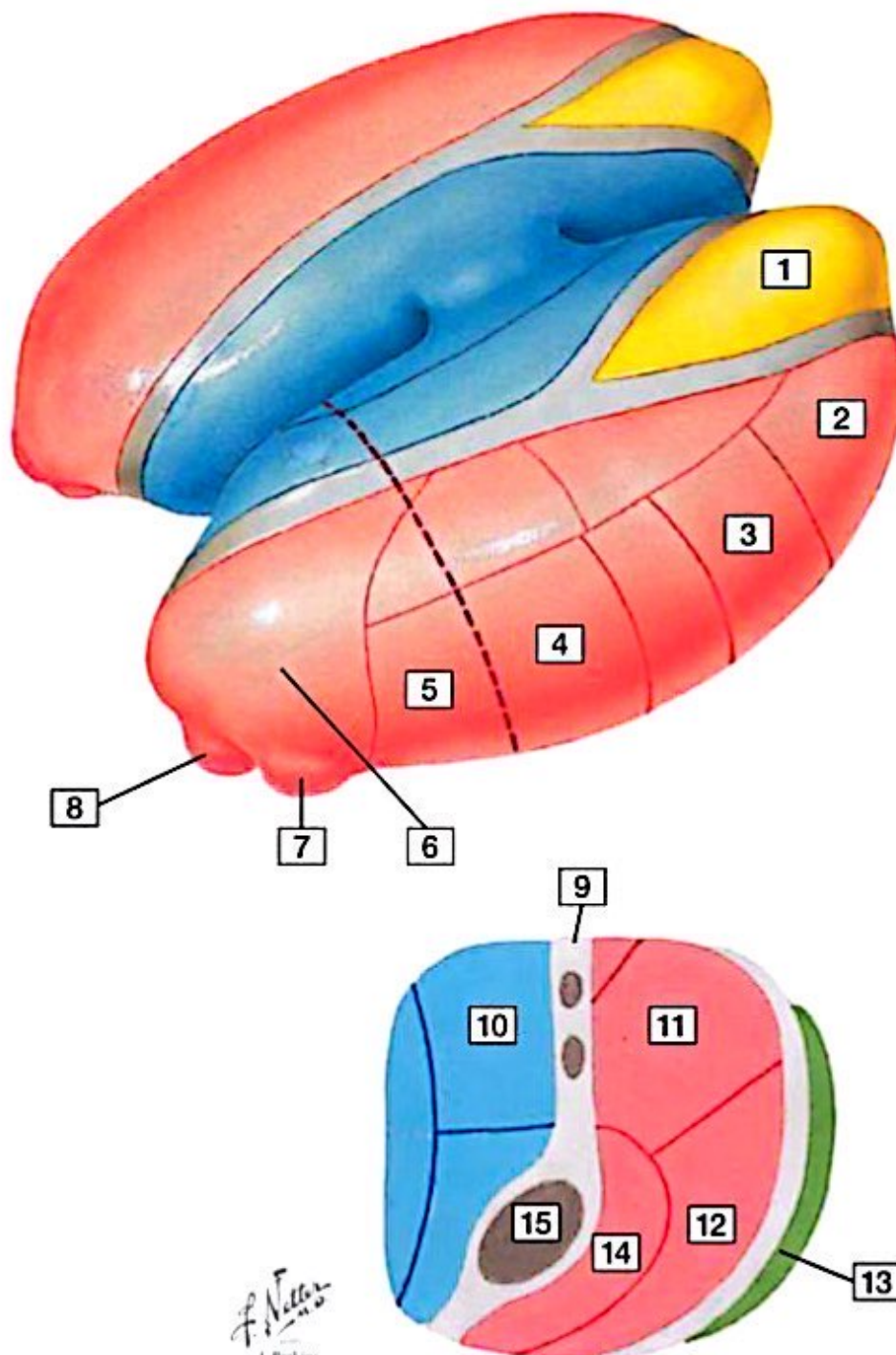
<b>CM</b>	Centromedian
<b>LD</b>	Lateral dorsal
<b>LP</b>	Lateral posterior
<b>M</b>	Medial group
<b>MD</b>	Medial dorsal
<b>VA</b>	Ventral anterior
<b>VI</b>	Ventral intermedial
<b>VL</b>	Ventral lateral
<b>VP</b>	Ventral posterior (ventrodorsal)
<b>VPL</b>	Ventral posterolateral
<b>VPM</b>	Ventral posteromedial

<span style="display:inline-block; width:15px; height:15px; background-color:blue; border:1px solid black;"></span>	<b>Lateral cell mass</b>
<span style="display:inline-block; width:15px; height:15px; background-color:red; border:1px solid black;"></span>	<b>Medial cell mass</b>
<span style="display:inline-block; width:15px; height:15px; background-color:green; border:1px solid black;"></span>	<b>Anterior cell mass</b>





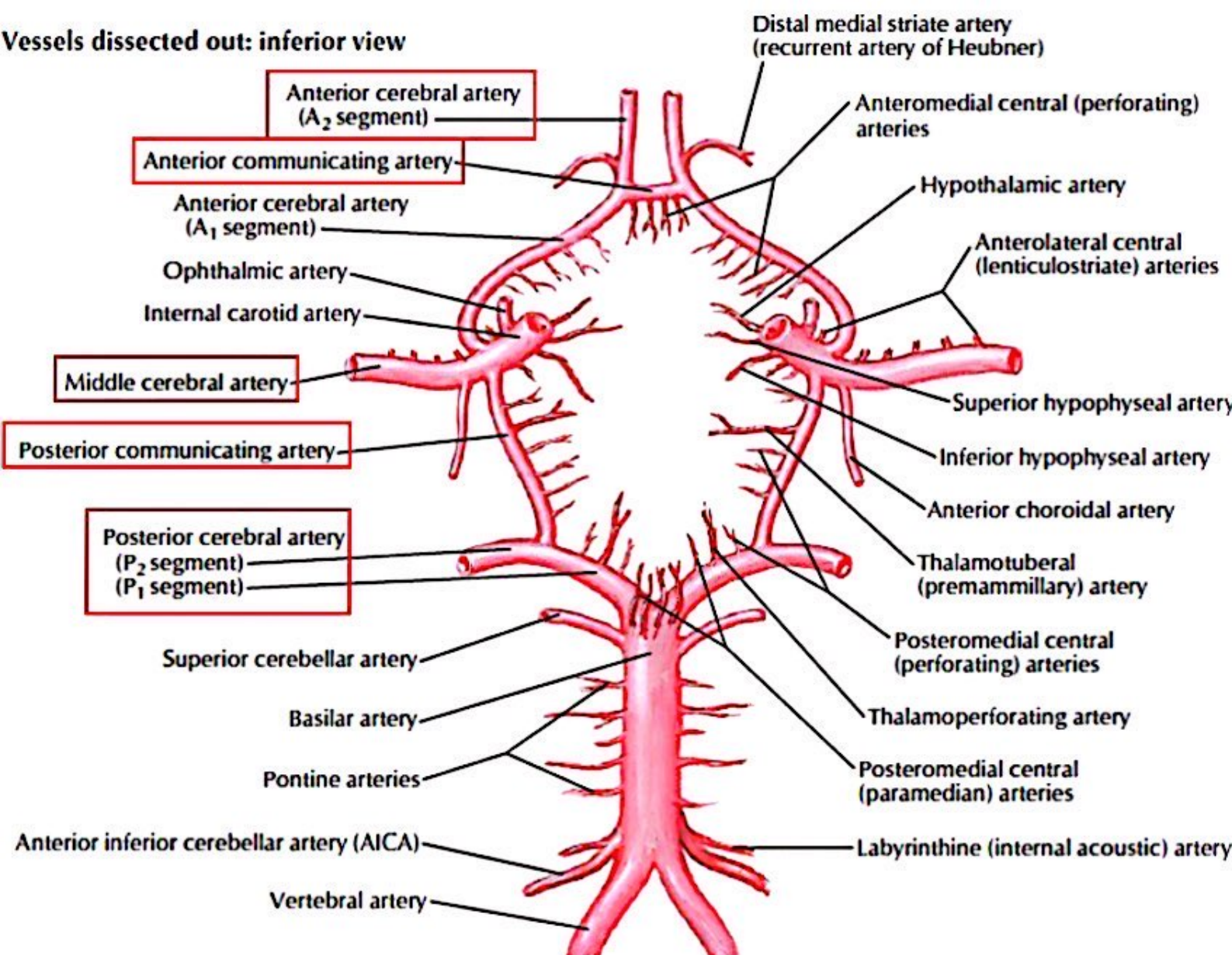
## Thalamic Nuclei



Overview of the Nervous System

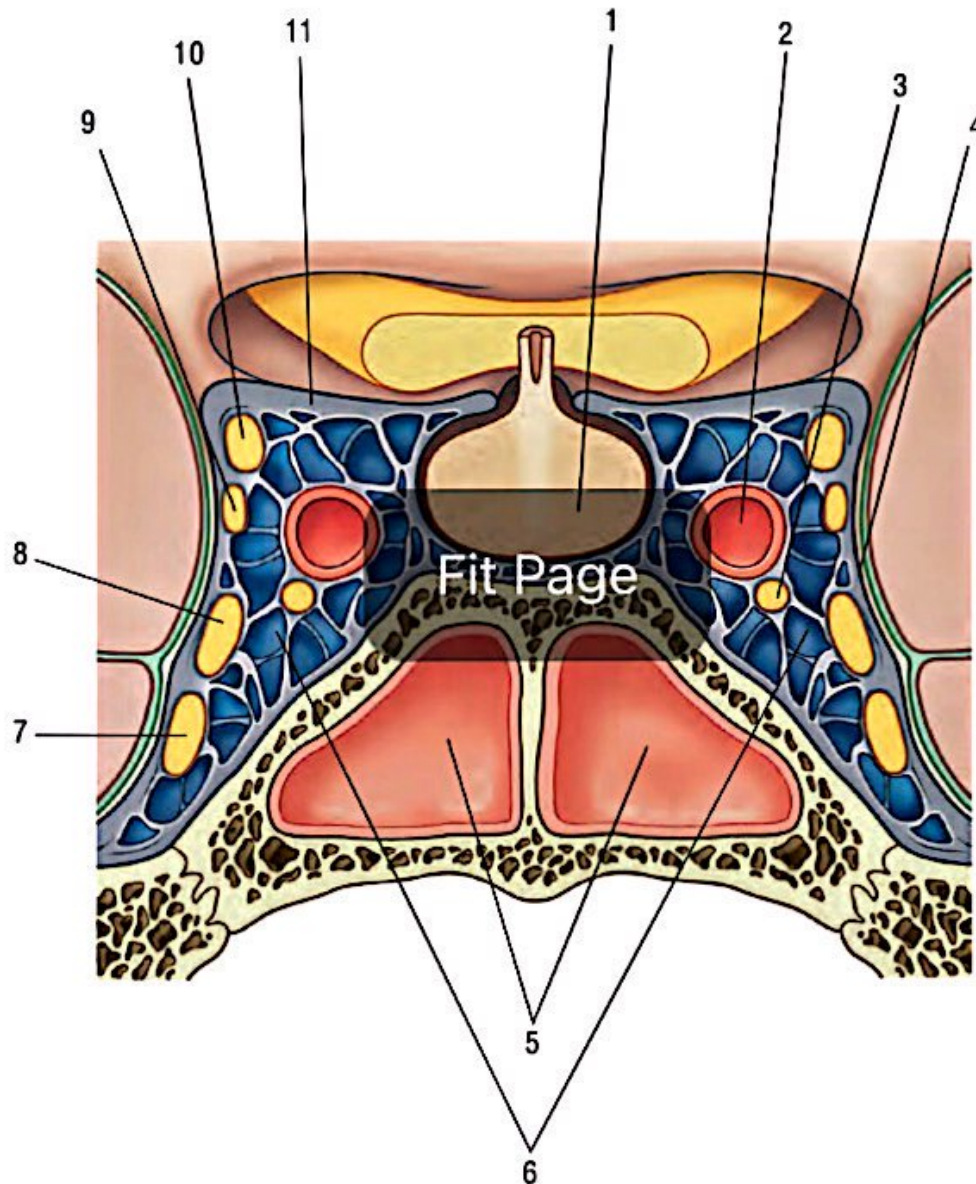
1-24


# Vessels dissected out: inferior view






**Identify the indicated structures related to the cavernous sinus.**

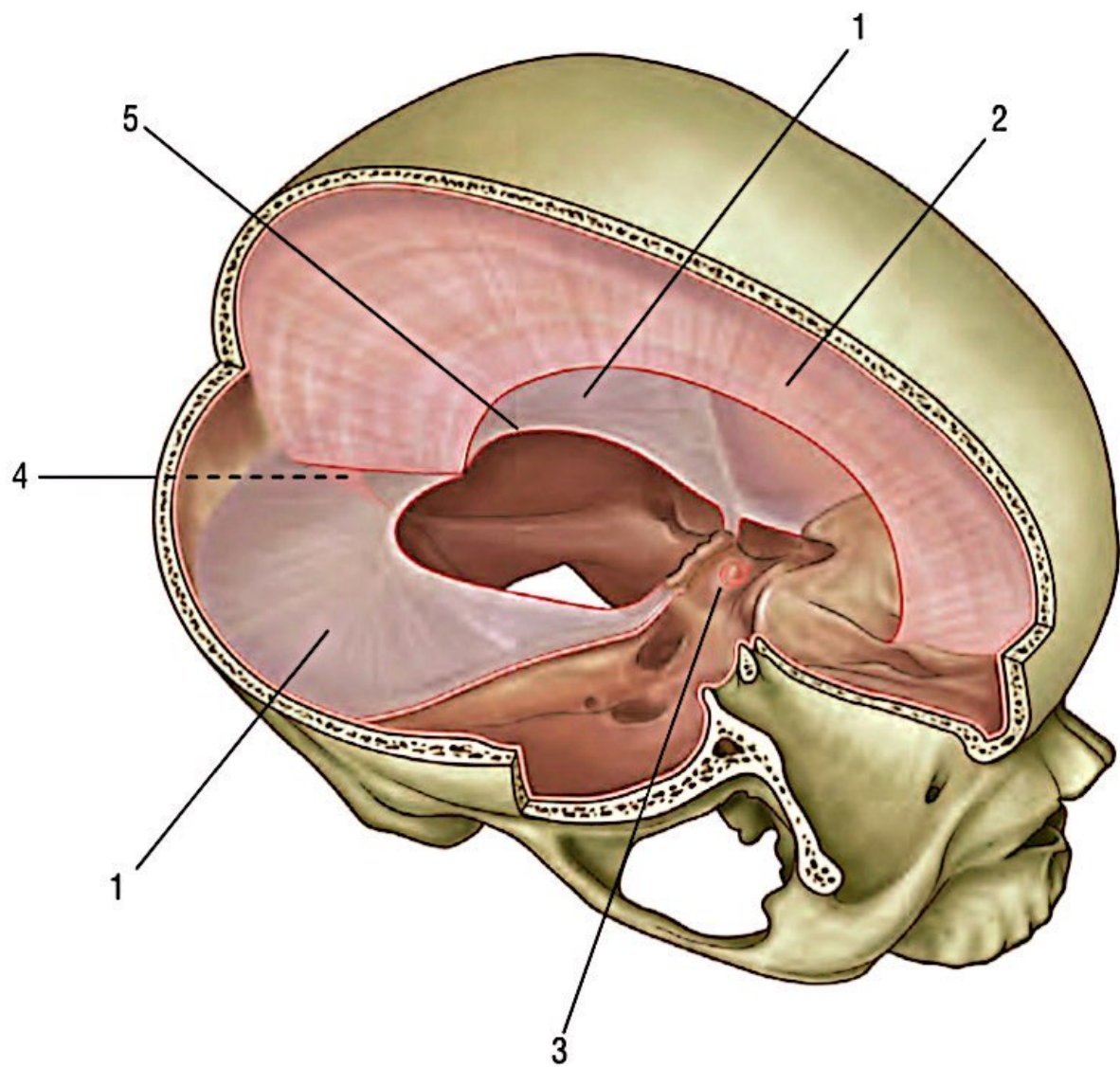




## CAVERNOUS SINUS



1. Pituitary gland
2. Internal carotid artery
3. Abducent nerve (VI)
4. Dura mater
5. Sphenoidal sinus
6. Cavernous sinus
7. Maxillary division of trigeminal nerve ( $V_2$ )
8. Ophthalmic division of trigeminal nerve ( $V_1$ )
9. Trochlear nerve (IV)
10. Oculomotor nerve (III)
11. Diaphragma sellae

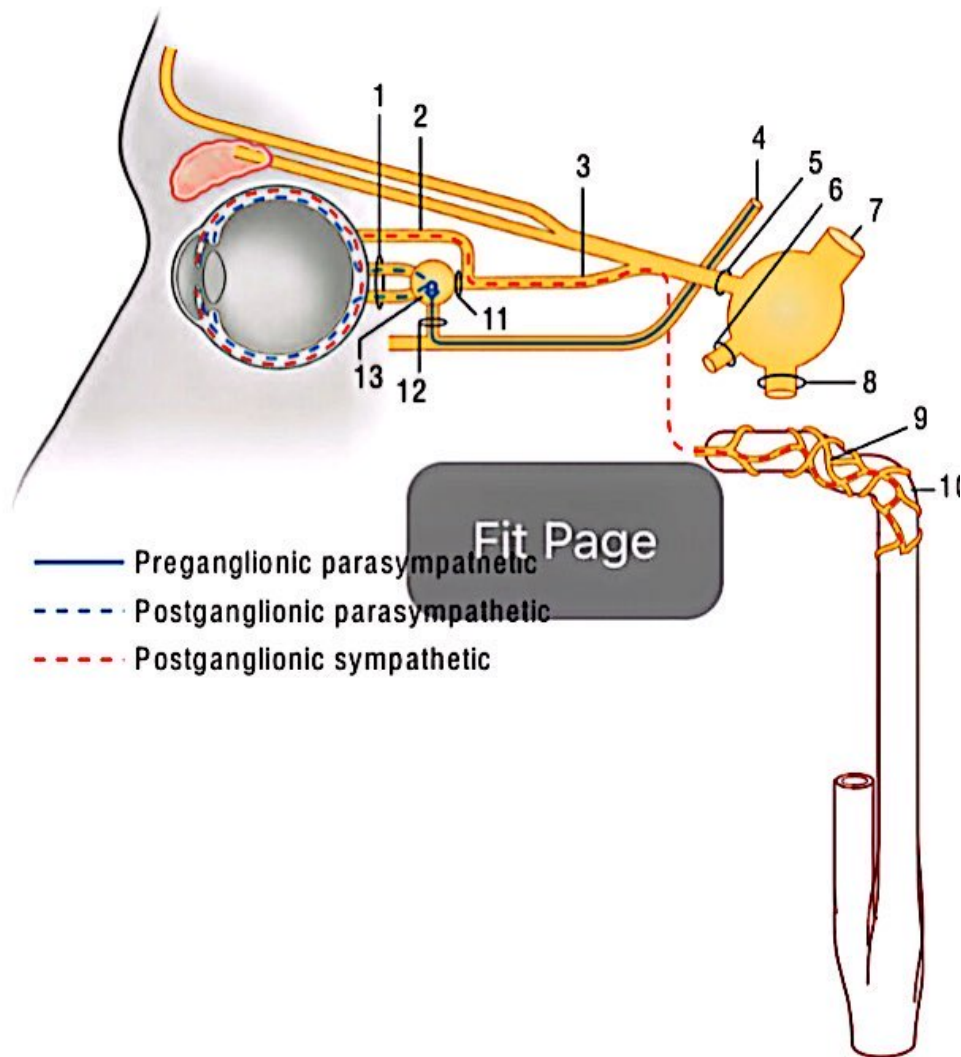


## DURAL SEPTA



1. Tentorium cerebelli
2. Falx cerebri
3. Diaphragma sellae
4. Falx cerebelli
5. Tentorial notch

Identify the indicated structures.

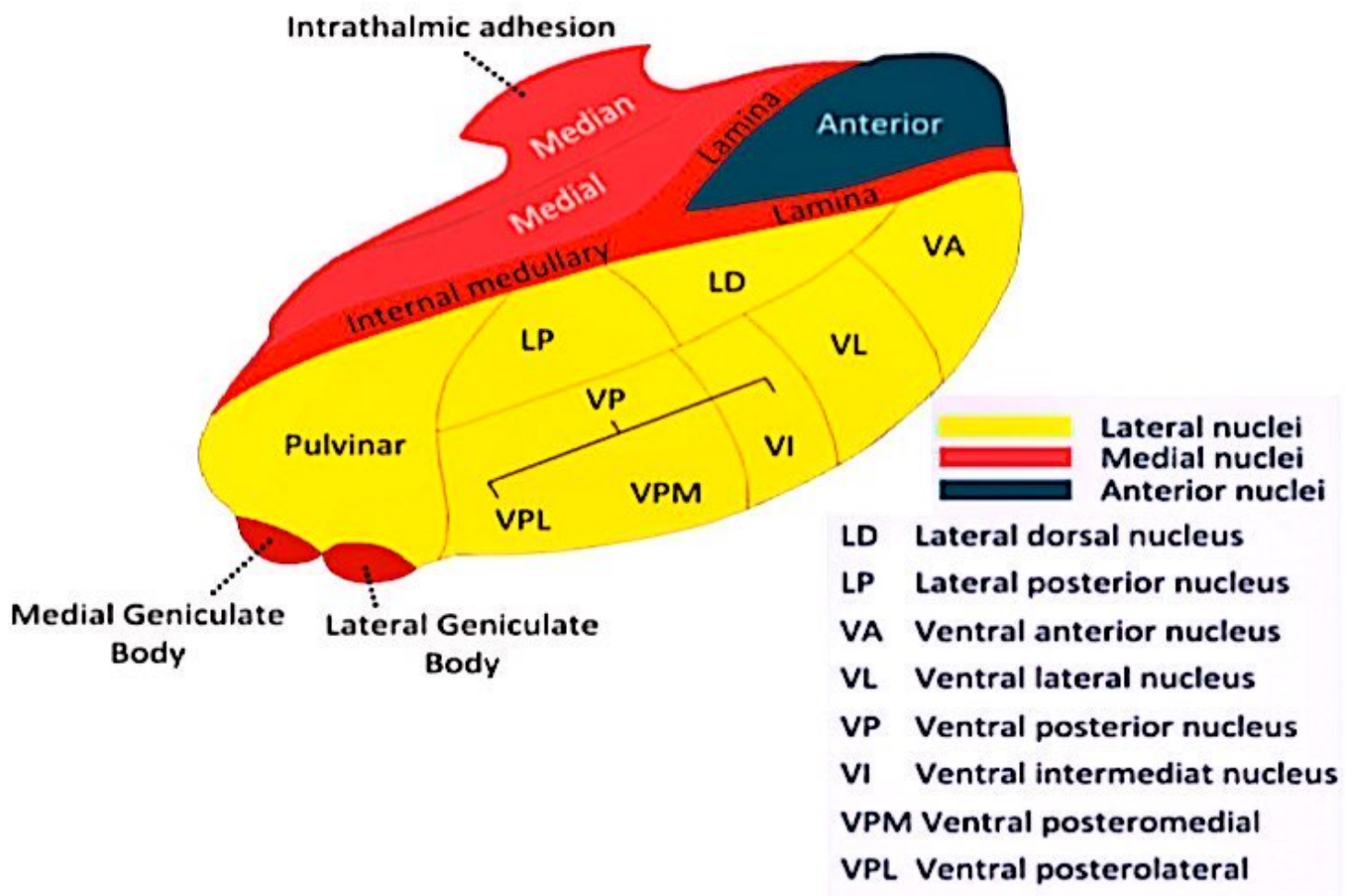


## VISCERAL EFFERENT (MOTOR) INNERVATION: EYEBALL (IRIS AND CILIARY BODY)

1. Short ciliary nerves
2. Long ciliary nerves
3. Nasociliary nerve
4. Oculomotor nerve (III)
5. Ophthalmic nerve ( $V_1$ )
6. Maxillary nerve ( $V_2$ )
7. Trigeminal nerve (V)
8. Mandibular nerve ( $V_3$ )
9. Internal carotid plexus (sympathetic)
10. Internal carotid artery
11. Nasociliary root of ciliary ganglion (sensory)
12. Oculomotor root of ciliary ganglion (preganglionic parasympathetic)



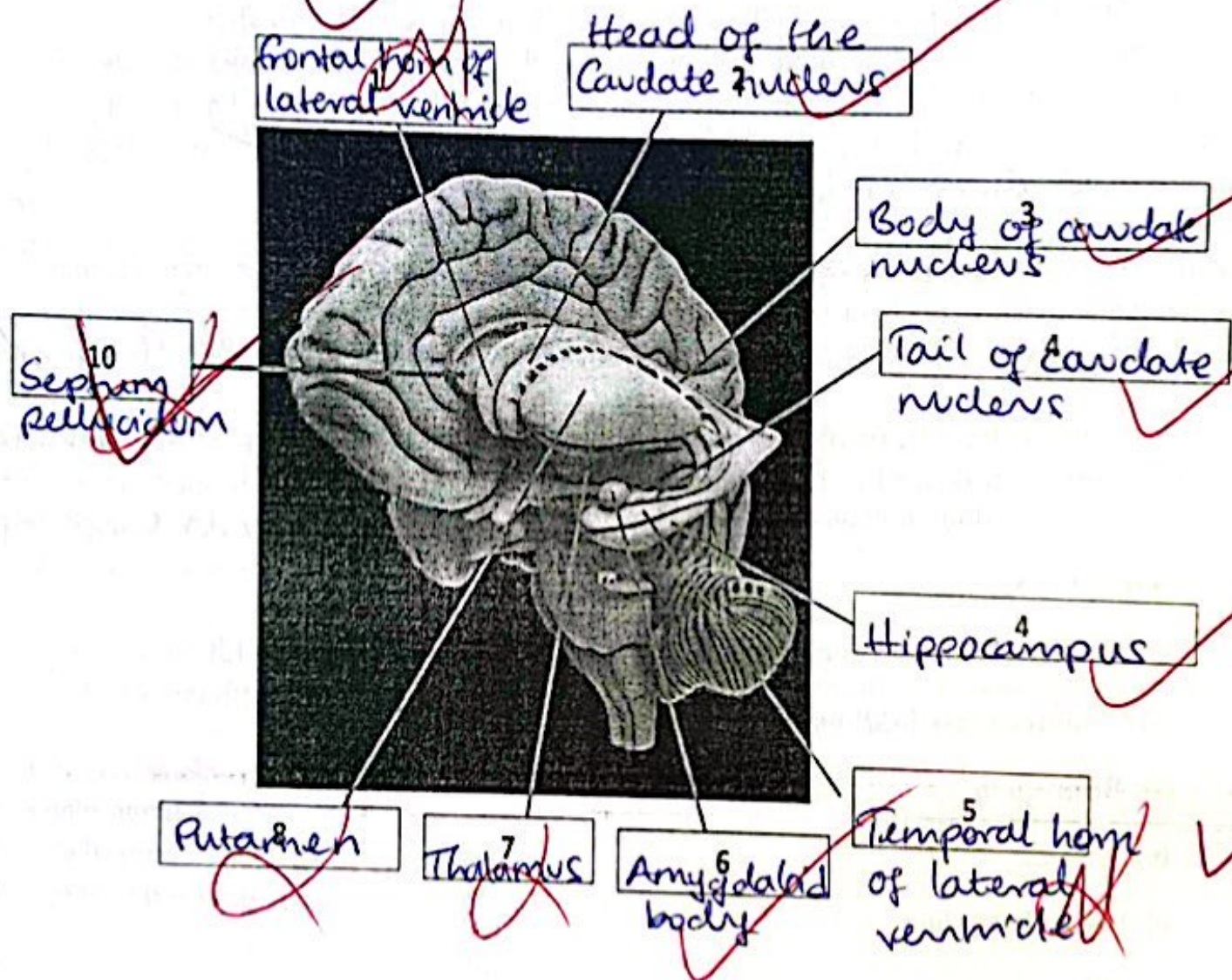
# Thalamic Nuclei



Dr. Mukape Mukape

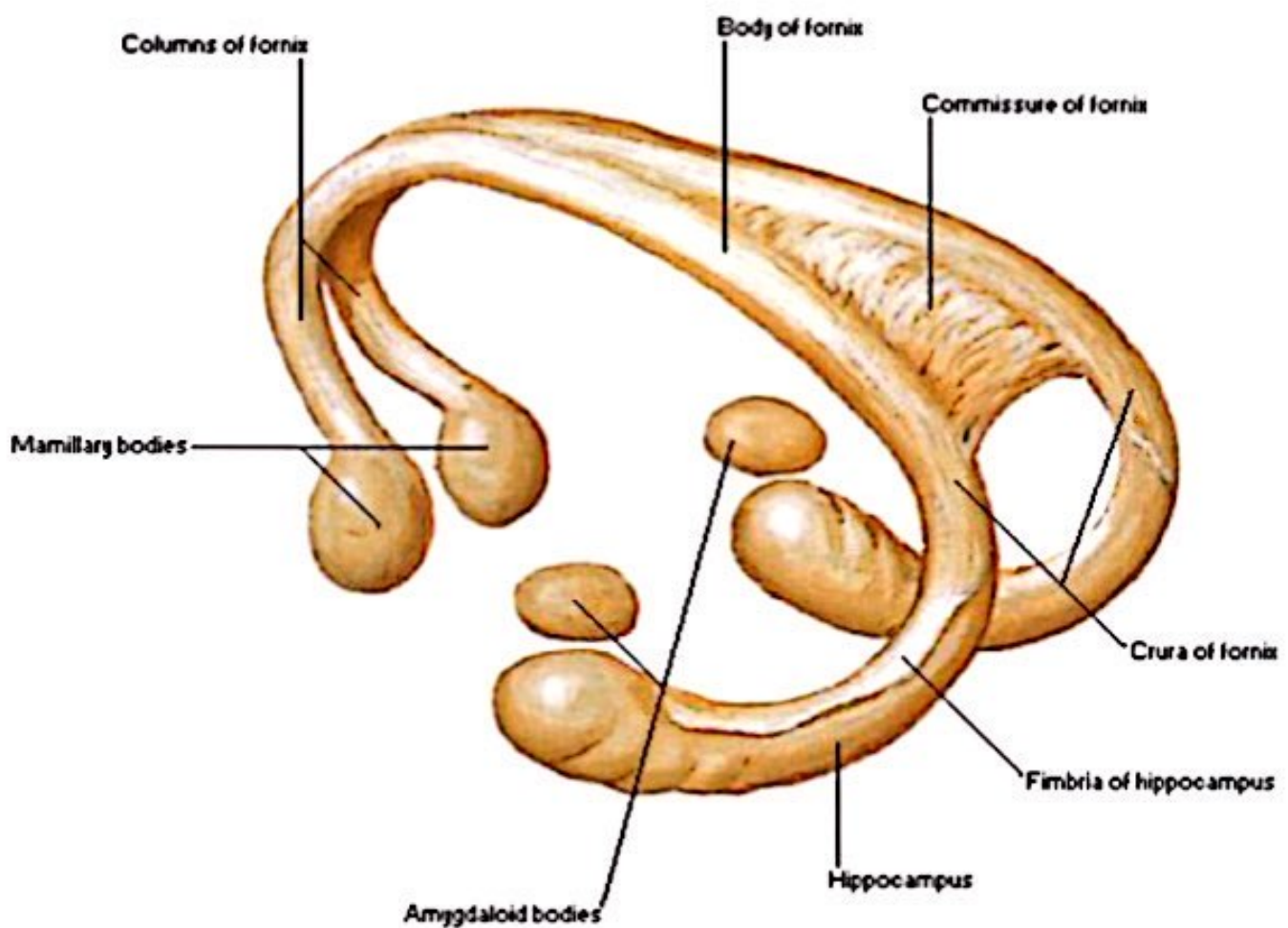


3. IDENTIFY THE FOLLOWING PARTS OF THE BRAIN AND INSERT YOUR ANSWERS IN THE BOXES PROVIDED.



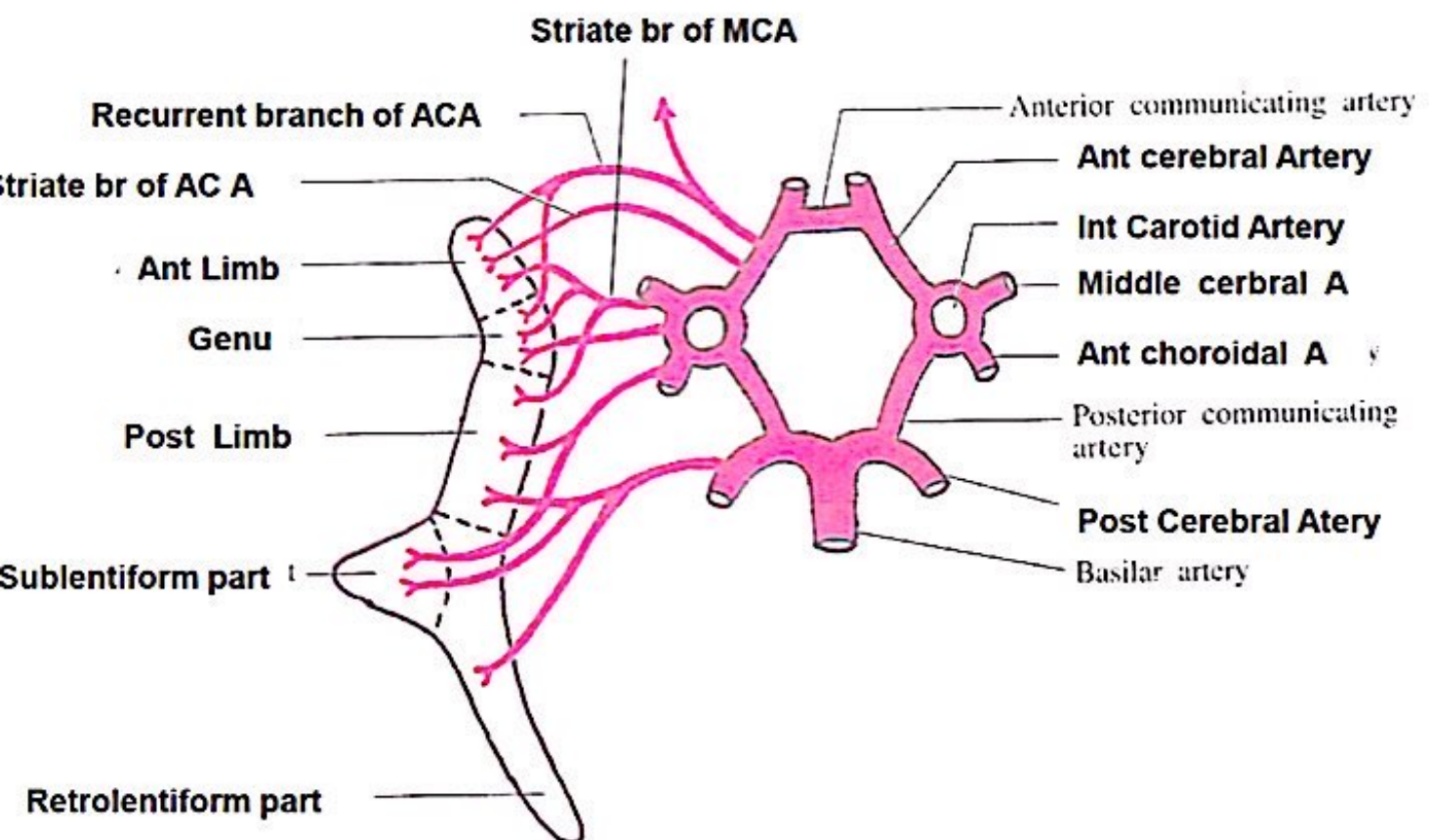
# Fornix

## Schema of Fornix



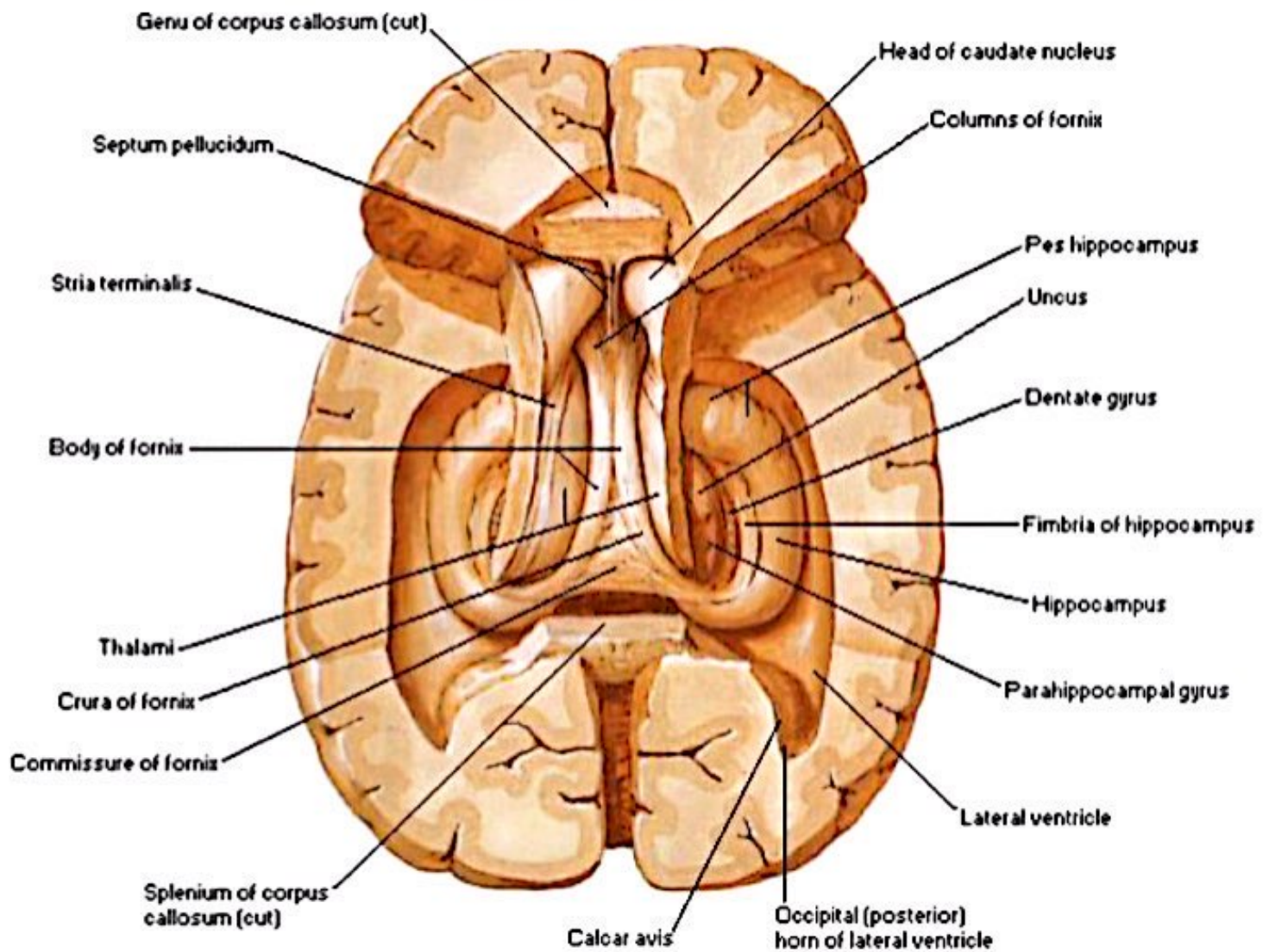


# ARTERIAL SUPPLY OF I C



# Overview of Limbic Structures

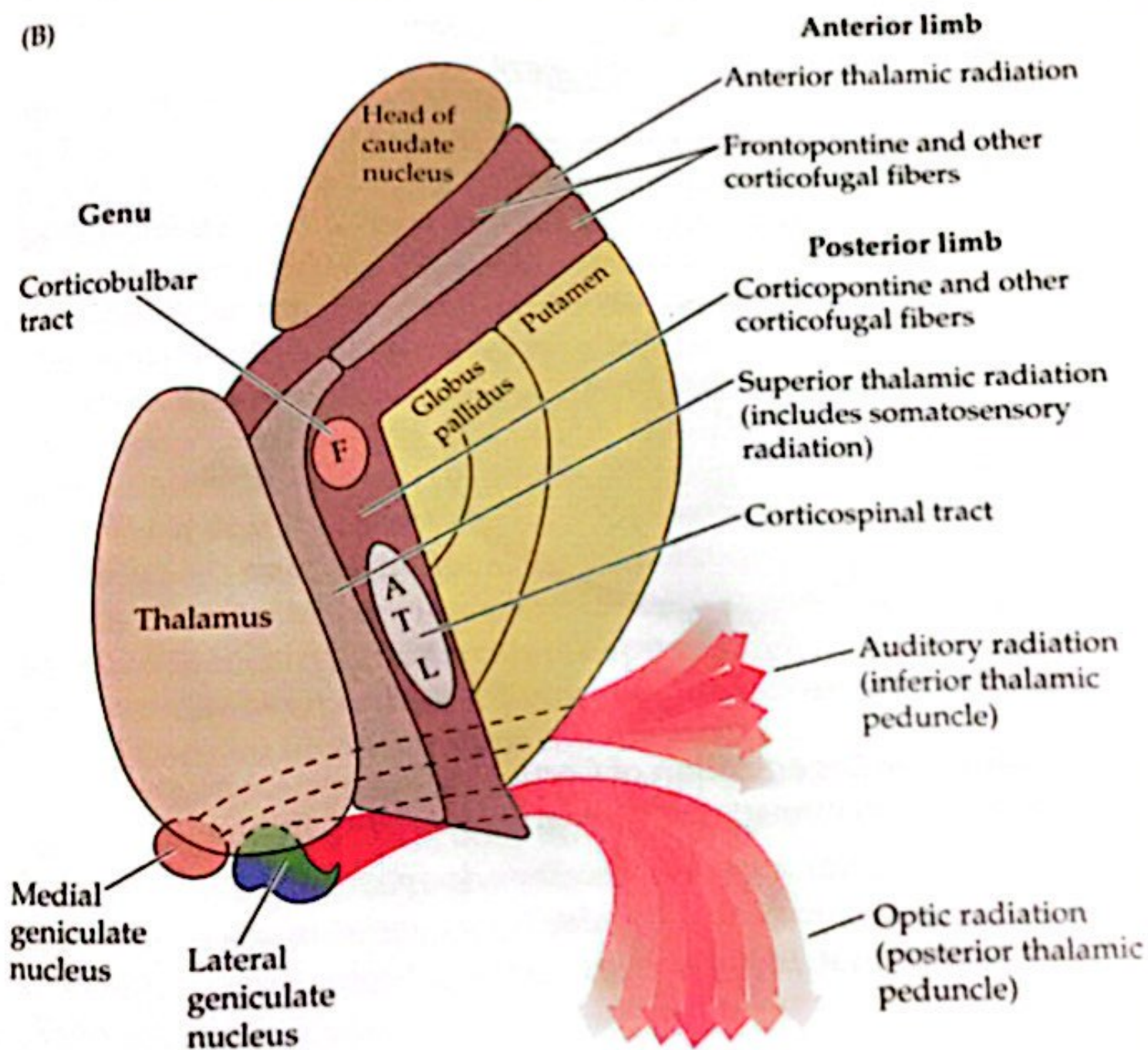
## Superior Dissection



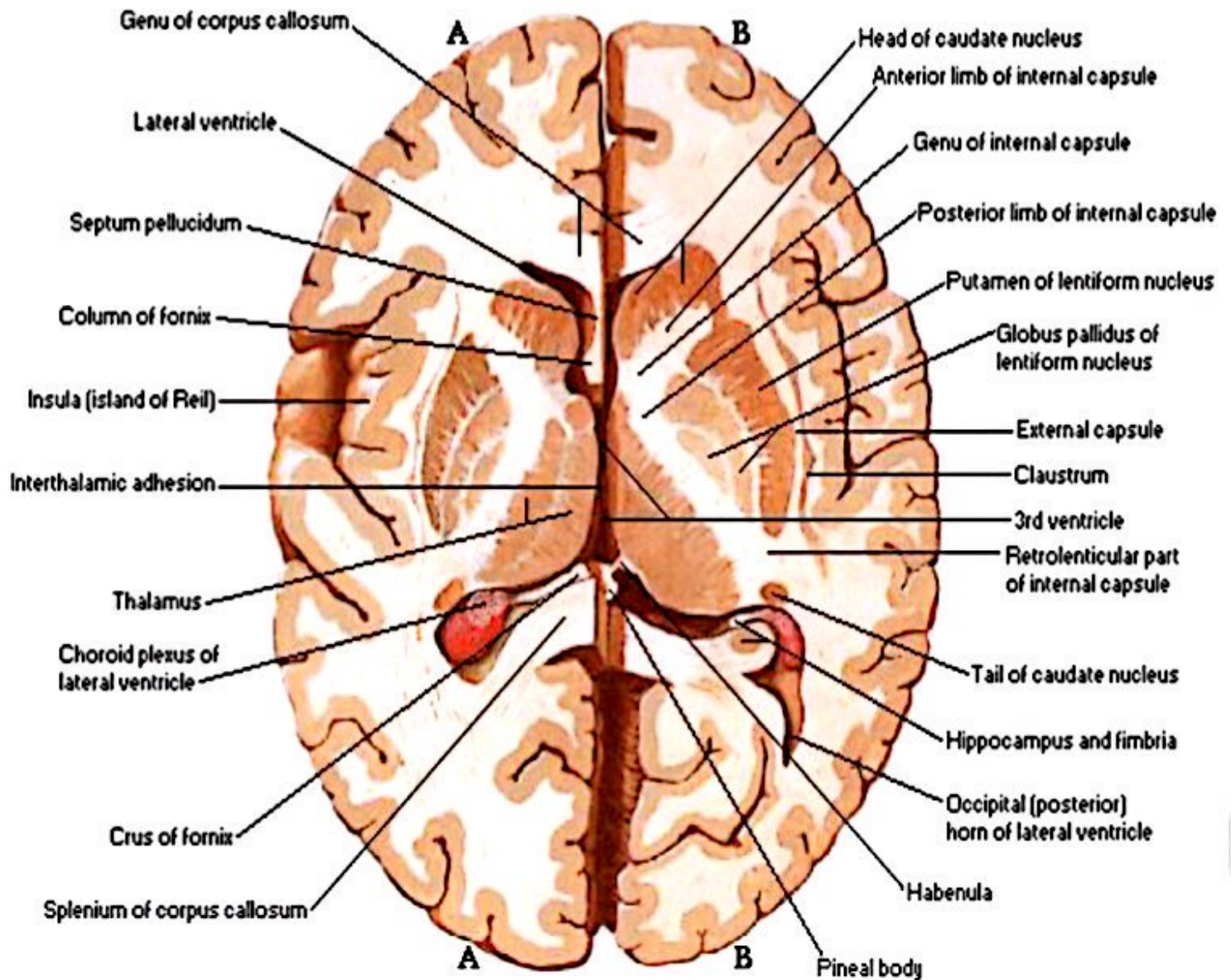
Dr. Mukape Mukape



(B)



## Horizontal Sections through Cerebrum





# Overview of Limbic Structures

