

DEM 2110

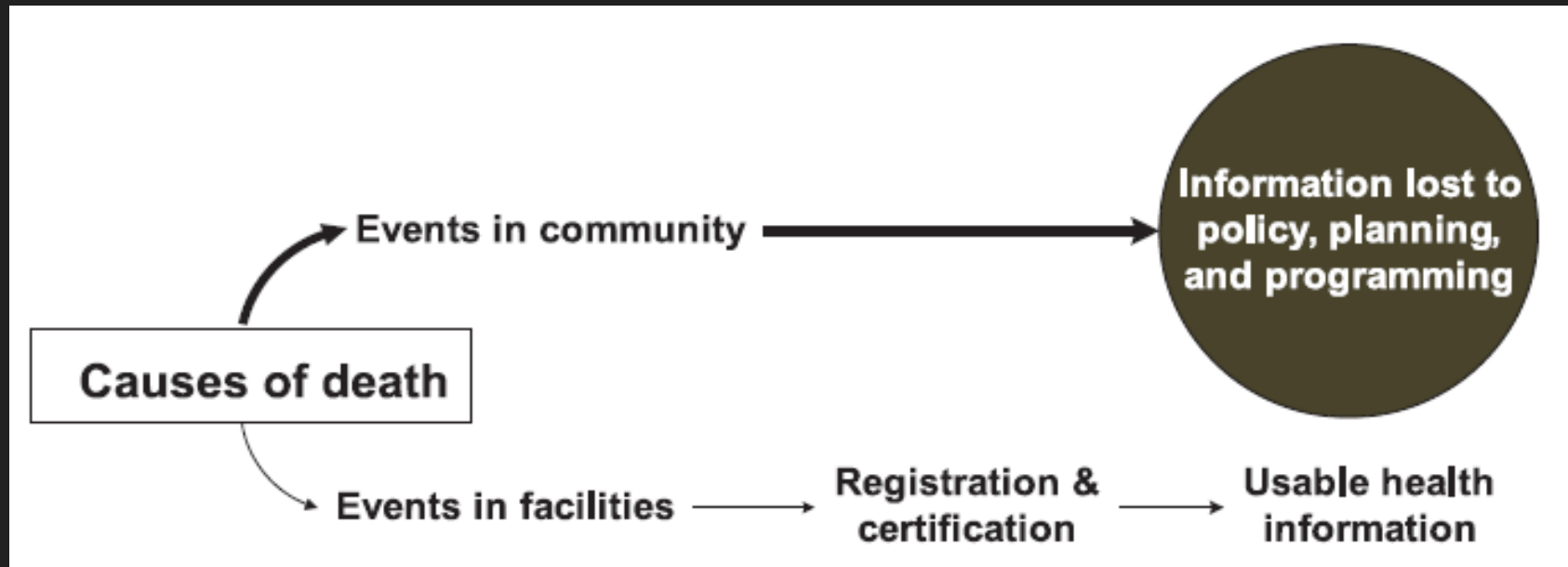
**Sample Vital Registration with
Verbal Autopsy (SAVVY)**

Introduction

- Accurate statistics on births, deaths, and the causes of death are lacking for the vast majority of the world's poorest countries;
- In sub-Saharan Africa, for example, fewer than 10 countries have routine vital statistics systems that produce usable data;
- Reliable data on levels of adult death - let alone causes of death - simply do not exist for the majority of developing countries, where a large majority of deaths occur at home.

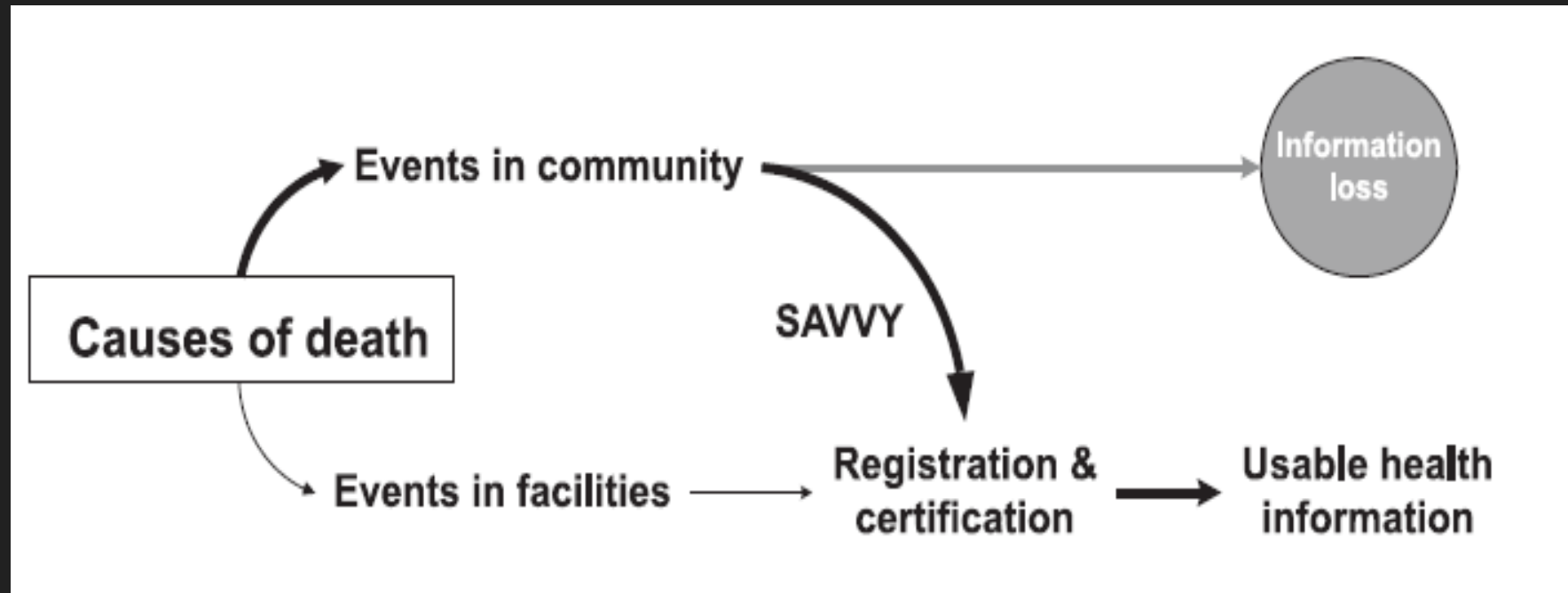
The Objective is to:

Move from a situation in which knowledge of most events that take place in communities and households is lost – As seen in this figure:



Objective is to

- One in which information about those vital events is brought into the health information system



Rationale for SAVVY

- Given the present inadequacies of current knowledge, what are the best ways to measure and monitor vital events and related socio-demographic information in the short- to medium-term?
- While they cannot substitute for universal civil registration, complementary methods for vital events measurement such as those contained in the SAVVY can fill this crucial void in the public health evidence base
- The SAVVY is capable of generating nationally representative vital events information, including information on causes of death, or strengthening existing sources of data

What is a SAVVY Sample Registration System?

- SAVVY stands for SAmple Vital Registration with Verbal AutopsY;
- Aims to improve the quality of vital statistics where high coverage of civil registration and good cause of death data are not available
- SAVVY methods are integrated into the Health Metrics Network's vision of “stepping stones” to better vital events monitoring, and are entirely harmonized to the WHO International Classification of Diseases (ICD).

Resources to implement SAVVY

- Demographic surveillance system (DSS) — DSS is a complete and continuous enumeration of births, deaths, and migration in a geographically defined population
- Mortality surveillance system (MSS) — MSS consists of the active reporting of deaths in a geographically defined population. Verbal autopsy (VA) interviews are used to determine the probable causes of death
- Death Certification and ICD Coding — This involves application of the tenth revision of the International Classification of Diseases (ICD-10) and WHO-approved procedures to certify deaths from verbal autopsy interviews and assign a probable cause of death; and
- Nested surveys — Nested surveys consist of focused sets of questions and are included in the census update rounds. Examples include surveys on poverty monitoring, reproductive health

Establishing a SAVVY

- In establishing a full SAVVY system, the following steps are needed:
 - select and define representative sample areas
 - complete baseline census is conducted of all households and residents in those areas. The census information on the residents of each sample area is updated annually
 - Following the baseline census and continuously thereafter, a key informant notifies a verbal autopsy interviewer of all deaths occurring in the sample area
 - Where a death has occurred, VA interviewer then conducts an interview at the household where that death took place

CONTINUOUS
OPERATIONS

ANNUAL
OPERATIONS

Central Office

Field Office Manager

**Census Supervisor
Coordinator**

Verbal Autopsy Supervisor

Census Supervisor

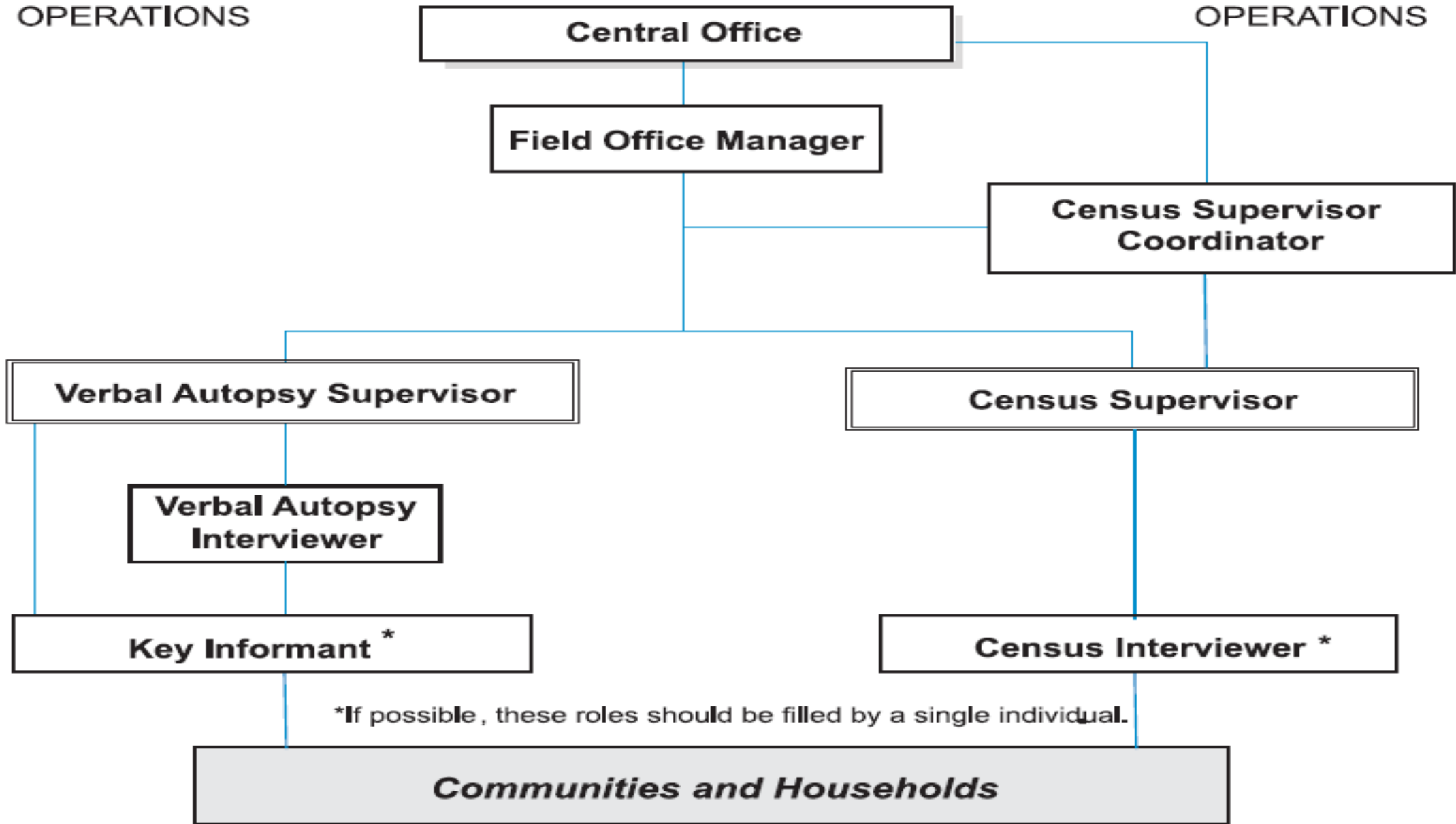
**Verbal Autopsy
Interviewer**

Key Informant *

Census Interviewer *

*If possible, these roles should be filled by a single individual.

Communities and Households



SAVVY Resources and Manuals

Central office manuals:

Data Processing Manager's Manual

SAVVY Budget Manual

Verbal Autopsy Certifier and Coder's Manual

Field office manuals:

Census Interviewer's Manual

Census Supervisor Coordinator's Manual

Census Supervisor's Manual

Census Update Interviewer's Manual

Field Office Manager's Manual

Key Informant's Manual

Verbal Autopsy Interviewer's Manual

Verbal Autopsy Supervisor's Manual

Training guides and materials:

Census Interviewer Training Guide

Census Interviewer's Workbook

Census Supervisor Training Guide

Census Update Interviewer Training Guide

Census Update Interviewer's Workbook

Key Informant's Training Guide

Verbal Autopsy Interviewer Training Guide

Verbal Autopsy Supervisor Training Guide

SAVVY Information Outputs and Use

- The census and mortality data in SAVVY can be used to produce “indicator packages” for reporting on, monitoring, and evaluating major programs at the national and international level;
- A fully implemented SAVVY system should also be capable of producing sub-national data
- Indicator packages and disease burden profiles can be pre-defined for the needs of each country implementing the system

Localized SAVVY information Profiles -use

- the proportion of the mortality burden that can be addressed by specific, locally available, and cost effective interventions;
- information on coverage of health services and use of health services in the period before death;
- data on use of maternal or family planning services, and household interventions such as oral rehydration therapy or insecticide treated bed nets;
- fertility and reproductive health data; and
- socio-demographic information including education, occupation, housing conditions, food security and poverty levels

SAVVY methods for verbal autopsy (including forms, certification, and cause of death assignment and coding) have been developed in collaboration with the WHO. The WHO publication *Verbal Autopsy Standards: Ascertaining and Attributing Cause of Death* is an essential resource for the application of SAVVY methods. This series of SAVVY mortality surveillance system manuals and guides, together with the WHO verbal autopsy standards publication and other documents, is available at no cost as a CD-ROM resource kit or as documents that can be downloaded from MEASURE Evaluation at:

<http://www.cpc.unc.edu/measure/leadership/savvy.html>