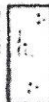

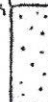
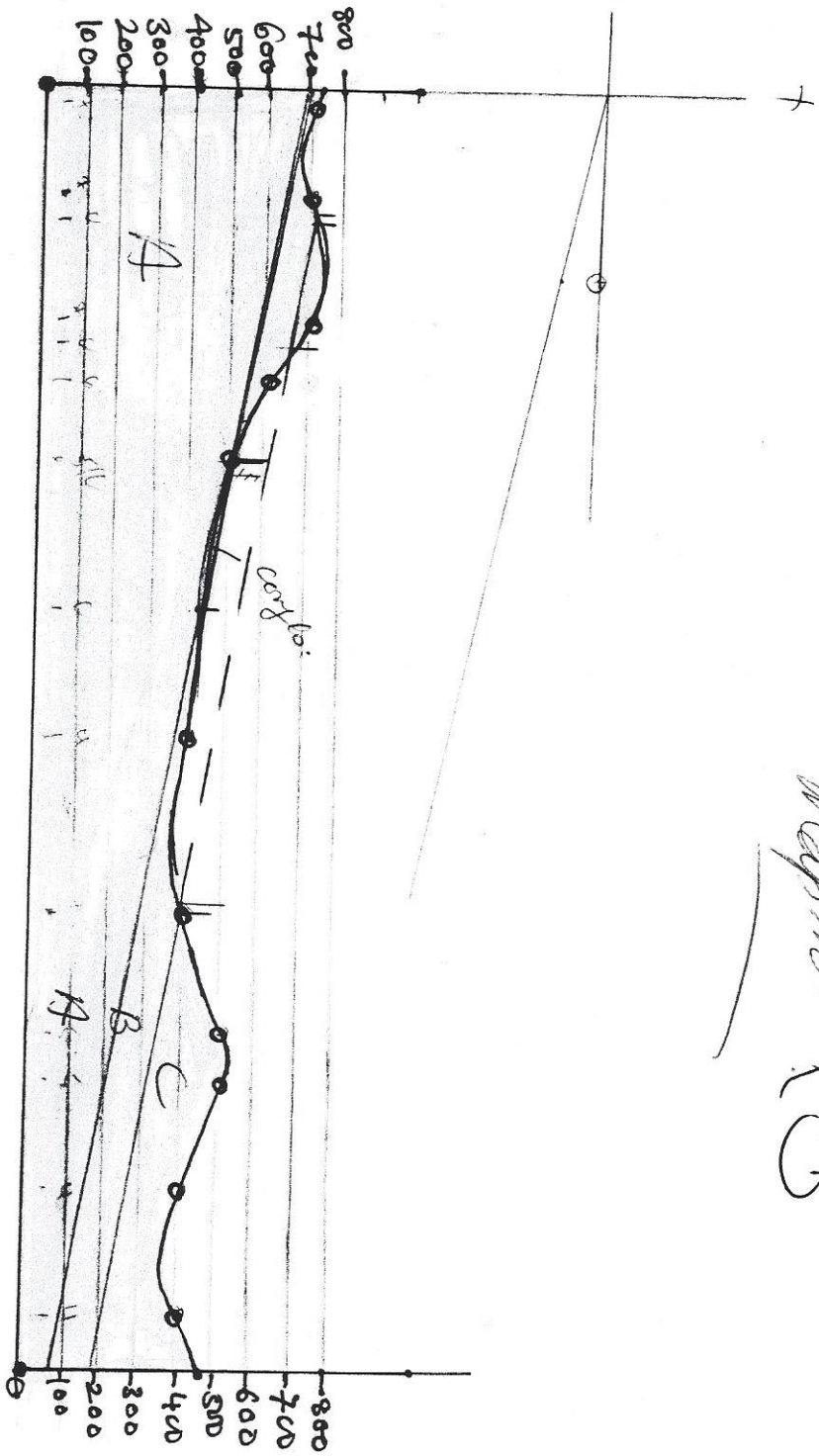


- Legend**
-  Grit
  -  Limestone
  -  Shale



**Problem:** Describe the geology of the area with a suitable cross section.

Scale 1" = 1000 ft



Map no. 8

Map no. 20

?



5 Attendance  
 5 Assignment  
 5 Maps

10 Midsem

30

20 Final part

50 - Final th

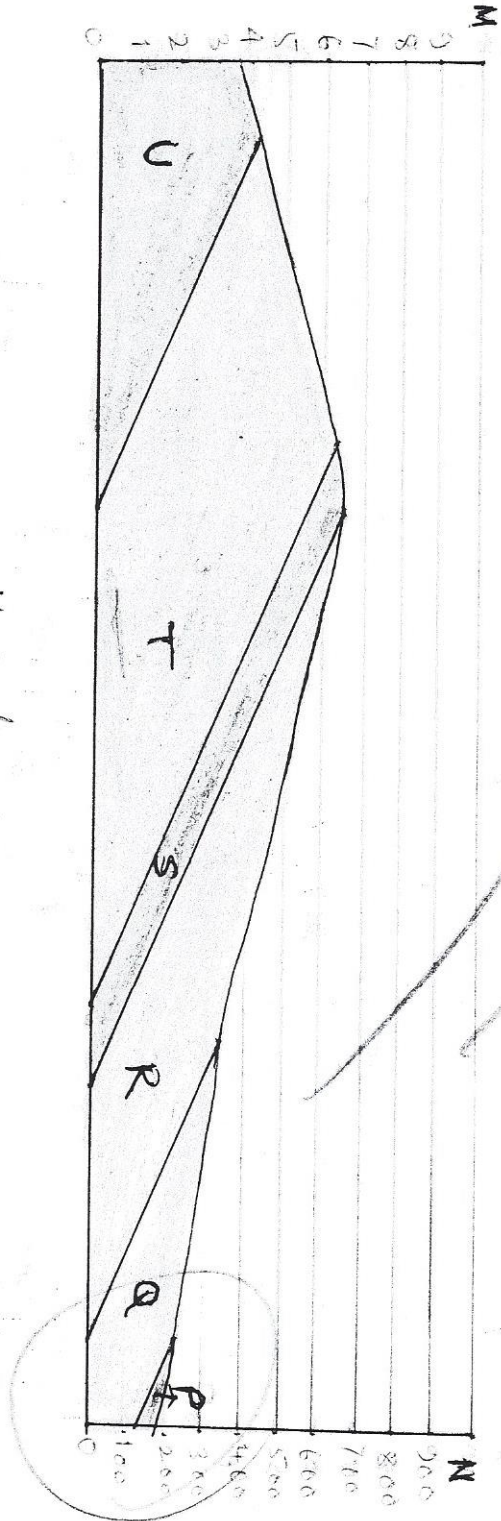
70

Map No. 22

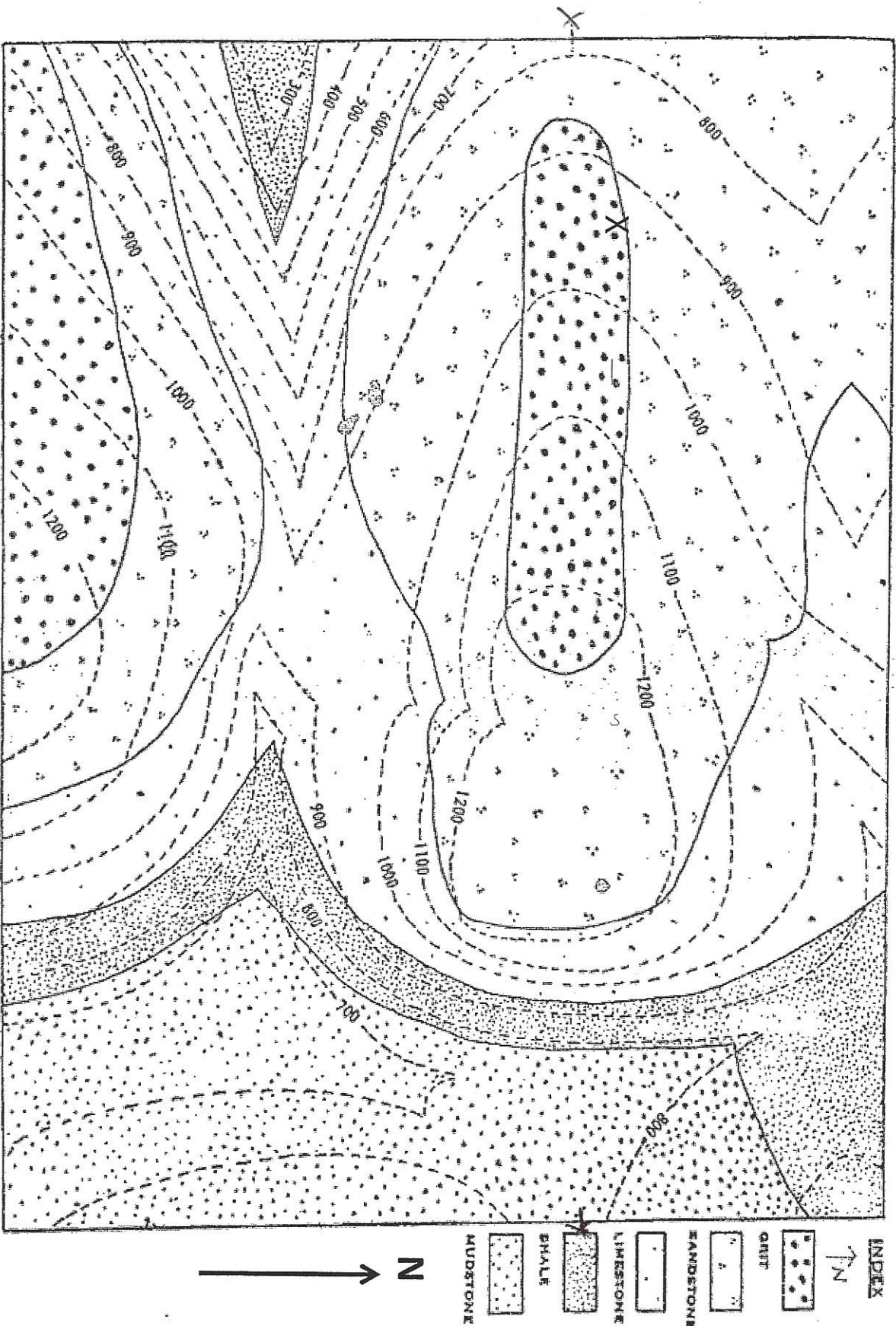
*Clack*

P  
 Q - 200  
 R - 300  
 S - 100  
 T - 500  
 U

H. Scale 1 cm = 200 m  
 V. Scale 1 cm = 200 m (0.5 cm = 100 m)



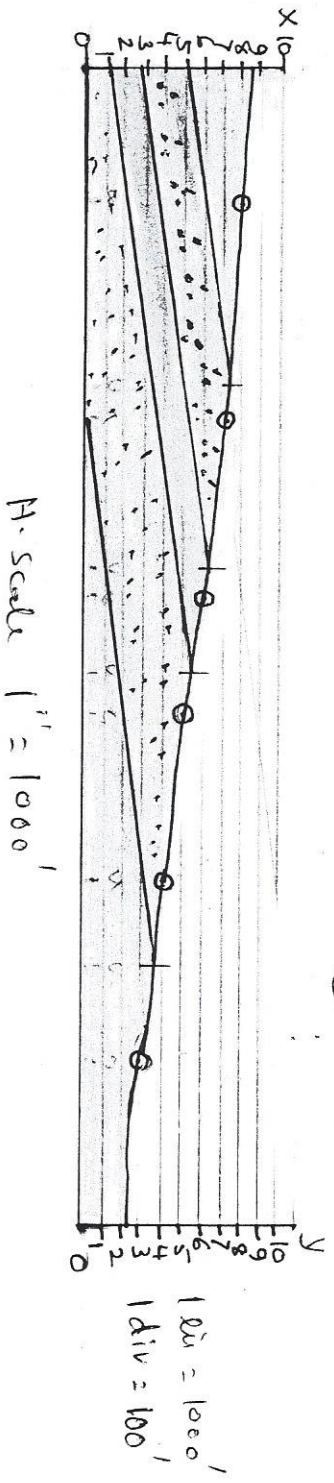
*g*



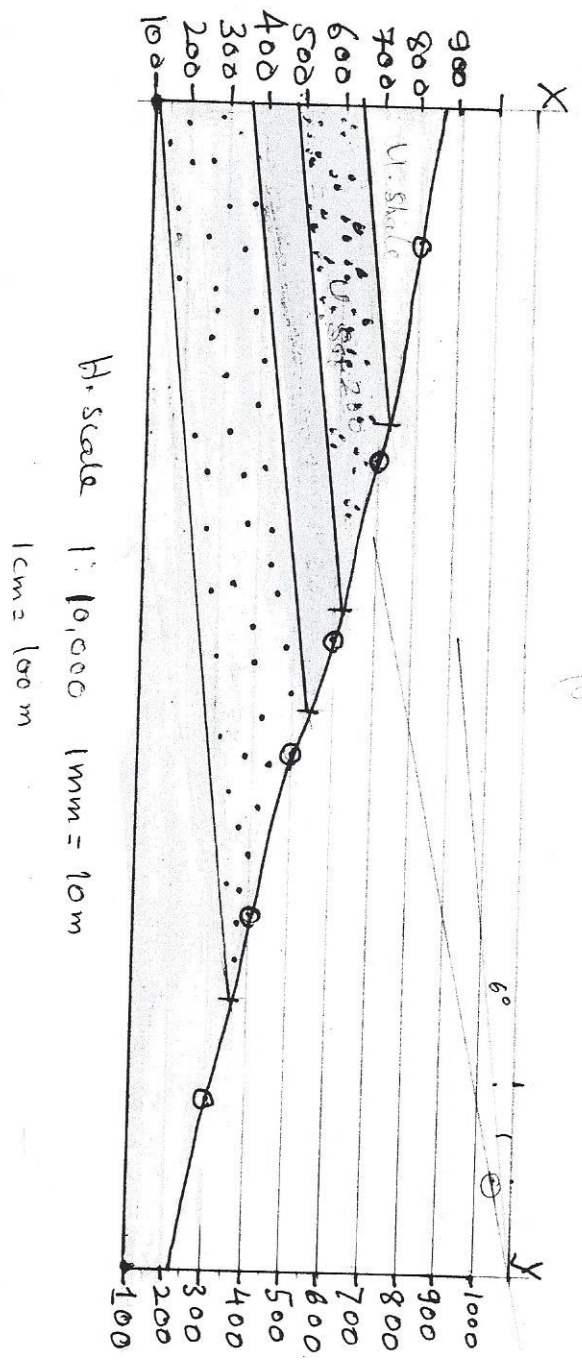
Map No. 21: Problem: Describe the geology of the areas with a suitable cross section

Map no 21 A

==



~~21~~



*Not necessary for  
vertical scale  
topography*

V. Scale  
1cm = 20cm  
0.5cm = 100m

*Map No 21A*