

DOOR No:	D1, D8	D26	D35	D37
QUANTITY REQUIRED:	TOTAL: 2 LH: 0 RH: 0 1 + 1/2: 0 DOUBLE: 2	TOTAL: 1 LH: 0 RH: 1 DOUBLE: 0	TOTAL: 1 LH: 0 RH: 0 1 + 1/2: 1 DOUBLE: 0	TOTAL: 1 LH: 0 RH: 0 DOUBLE: 1
FRAME:	45x45x2mm HEAVY DUTY ALUMINIUM FRAME TYPE FT4000. ANCHORED TO BRICKWORK	45x45x2mm HEAVY DUTY ALUMINIUM FRAME TYPE FT4000. ANCHORED TO BRICKWORK	45x45x2mm HEAVY DUTY ALUMINIUM FRAME TYPE FT4000. ANCHORED TO BRICKWORK	45x45x2mm HEAVY DUTY ALUMINIUM FRAME TYPE FT4000. ANCHORED TO BRICKWORK
FRAME FINISH:	POWDER COATED BLACK	POWDER COATED BLACK	POWDER COATED BLACK	POWDER COATED BLACK
DOOR:	STANDARD ALUMINIUM DOUBLE DOOR WITH 45mm WIDE HEAVY DUTY ALUMINIUM SECTIONS AND GLAZING INFILL	ALUMINIUM DOOR WITH 45mm WIDE HEAVY DUTY ALUMINIUM SECTIONS AND GLAZING INFILL	STANDARD ALUMINIUM DOUBLE DOOR WITH 45mm WIDE HEAVY DUTY ALUMINIUM SECTIONS AND GLAZING INFILL	STANDARD ALUMINIUM DOUBLE DOOR WITH 45mm WIDE HEAVY DUTY ALUMINIUM SECTIONS AND GLAZING INFILL
DOOR FINISH:	POWDER COATED BLACK	POWDER COATED BLACK	POWDER COATED BLACK	POWDER COATED BLACK
HINGES:	No 6 OF AS FLUSH HINGE 4"x3"x2mm (HNFL-403020-SAA).	No 3 OF AS FLUSH HINGE 4"x3"x2mm (HNFL-403020-SAA).	No 6 OF AS FLUSH HINGE 4"x3"x2mm (HNFL-403020-SAA).	No 6 OF AS FLUSH HINGE 4"x3"x2mm (HNFL-403020-SAA).
GLAZING:	3+3mm THICK LAMINATED SAFETY GLASS PANE.	3+3mm THICK LAMINATED SAFETY GLASS PANE.	3+3mm THICK LAMINATED SAFETY GLASS PANE.	3+3mm THICK LAMINATED SAFETY GLASS PANE.
EXTERNAL SILL:	186x55mm P.C. THRESHOLD TYPE: WATCRETE, CODE: TA	186x55mm P.C. THRESHOLD TYPE: WATCRETE, CODE: TA	NIL	186x55mm P.C. THRESHOLD TYPE: WATCRETE, CODE: TA
IRONMONGERY:	No 1 PAIR 400mm PULL HANDLE BACK TO BACK (S206BBS), SOLENOID LOCK W/OUT CYL 25mm (L-4040001), No 1 OF CYLINDER PROFILE GMK (2x19SCGMK), No 2 OF ALUMINIUM FLUSH BOLT BY DOOR MANUFACTURER AND No 1 OF DUST PROOF STRIKE (8852SC).	PAIR OF SANDPIPER S S LEVER HANDLE ON ROSE (6104-06SS), 66mm EURO PROFILE KNOB CYLINDER (2x15NPMK), NARROW STYLE EURO PROFILE CYLINDER UPRIGHT LOCK CASE (76611SS).	No 1 PAIR 400mm PULL HANDLE BACK TO BACK (S206BBS), SOLENOID LOCK W/OUT CYL 25mm (L-4040001), No 1 OF CYLINDER PROFILE GMK (2x19SCGMK), No 2 OF ALUMINIUM FLUSH BOLT BY DOOR MANUFACTURER AND No 1 OF DUST PROOF STRIKE (8852SC).	No 1 PAIR 400mm PULL HANDLE BACK TO BACK (S206BBS), No 2 OF ESCUTCHEONS FOR EURO PROFILE CYLINDER LOCK (S30505), NARROW STYLE EURO PROFILE CYLINDER DEAD LOCK CASE (L-21315-40), No 1 OF CYLINDER PROFILE GMK (2x19SCGMK), No 2 OF ALUMINIUM FLUSH BOLT BY DOOR MANUFACTURER AND No 1 OF DUST PROOF STRIKE (8852SC).
DOOR LATCH:	NIL	NIL	NIL	NIL
DOOR CLOSER:	No 1 OF UNION DC 737 EN3-5 SC HO (737SCHO).	NIL	No 1 OF UNION DC 737 EN3-5 SC HO (737SCHO).	No 1 OF UNION DC 737 EN3-5 SC HO (737SCHO).
DOOR STOP:	NIL	NIL	No 2 OF FLOOR DOOR STOP SATIN SS (87001SS)	NIL

GENERAL:
 G1. THE DESIGN ON THIS DRAWING IS COPYRIGHT AND REMAINS THE PROPERTY OF TONDOLO ARCHITECTS.
 G2. THE DRAWING MAY NOT BE COPIED OR REPRODUCED IN WHOLE OR IN PART WITHOUT THE WRITTEN PERMISSION OF TONDOLO ARCHITECTS.
 G3. ANY CONSTRUCTION WORK UNDERTAKEN PRIOR TO MUNICIPAL APPROVAL OF THE PROJECT SHALL BE UNDERTAKEN AT THE RISK OF THE CLIENT.
 G4. ALL WORK TO COMPLY WITH NBR AND BUILDING STANDARDS ACT 103 OF 1977, SANS 10400 AND SANS 204.
 G5. THIS DRAWING IS NOT TO BE SCALED. FIGURED DIMENSIONS PREVAIL.
 G6. ALL RELEVANT DETAILS, DIMENSIONS AND LEVELS TO BE CHECKED ON SITE BEFORE COMMENCEMENT OF ANY WORK. DISCREPANCIES TO BE IMMEDIATELY REPORTED TO THE ARCHITECT. THE ARCHITECT ACCEPTS NO RESPONSIBILITY FOR THE MISINTERPRETATION OF DRAWINGS.
 G7. SAMPLES OF ALL SPECIFIED PRODUCTS TO BE SUBMITTED FOR APPROVAL TO THE ARCHITECT BEFORE FITTING ON SITE.
 G8. A FULL SET OF THE LATEST DRAWINGS ARE TO BE KEPT AND MAINTAINED ON SITE FOR REFERENCE.

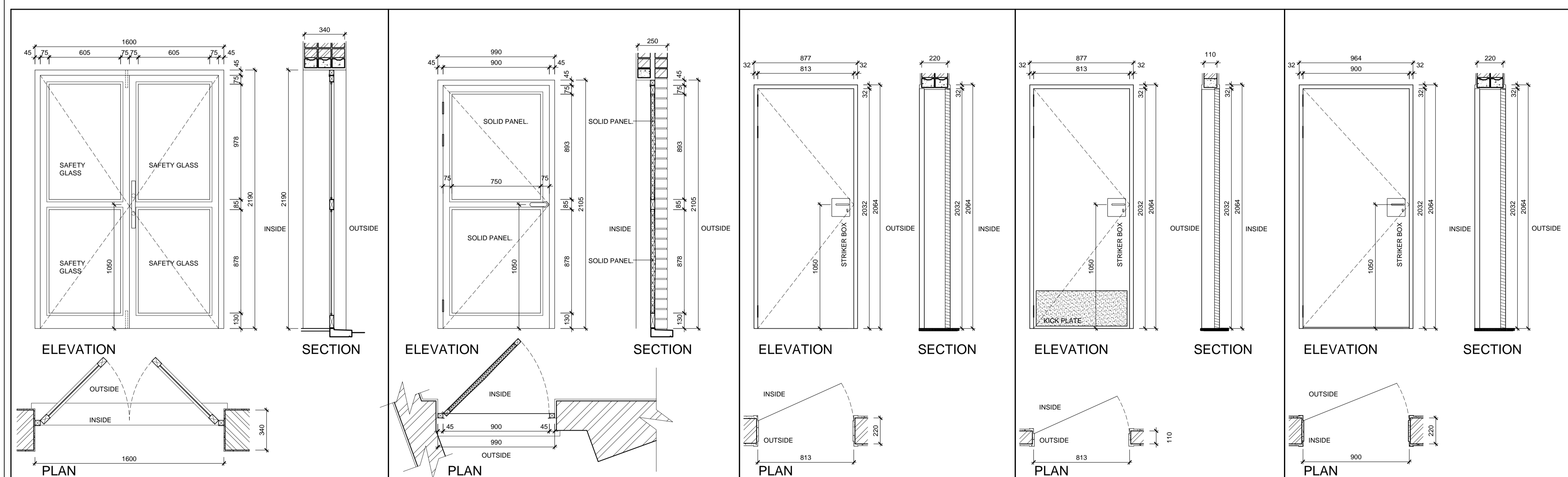
CONSTRUCTION:
 C1. REINFORCED CONCRETE, STRUCTURAL STEELWORK INCLUDING CONNECTIONS OF BALUSTRADES AND LAMINATED BEAMS TO STRUCTURES, LOAD BEARING MASONRY WALLS AND TIMBER STRUCTURES ALL TO BE IN ACCORDANCE WITH THE STRUCTURAL ENGS DESIGN AND SPECS.
 C2. ALL MECHANICAL VENTILATION TO BE ACCORDING TO ENGS DETAILS AND SPECS.
 C3. DPC TO ALL WALLS AT FLOOR LEVEL, UNDER WINDOW GILLS, AGAINST RETAINING WALLS AT CHANGES IN FLOOR LEVELS, BELOW CONCRETE SURFACE BEDS AND AT JUNCTIONS OF P.C. COPINGS.
 C4. ALL GLAZING TO BE IN ACCORDANCE WITH SANS 10400 PART N AND SANS 204. ALL GLAZING, EXCEPT WHERE INDICATED, IS TO BE LAMINATED SAFETY GLASS PERMANENTLY MARKED WITH GLASS CODE AND READILY VISIBLE.
 C5. WINDOW AREA TO BE MINIMUM 10% OF FLOOR AREA. OPENING SECTIONS OF WINDOWS AND DOORS TO BE MINIMUM 5% OF FLOOR AREA FOR VENTILATION.
 NOMINAL GLASS THICKNESS: 4mm - MAX SIZE OF PANE 1.5m²
 6mm - MAX SIZE OF PANE 2.1m²
 8mm - MAX SIZE OF PANE 3.2m²

NOTE
 ALL DOOR LOCKS EXCEPT FOR WC, DISABLED TOILET AND FIRE HOSE REEL CABINET TO BE OPERATED ON A GRAND MASTER KEY AND SUB MASTER KEY SYSTEM. FOR LOCK SPECIFICATION REFER TO IRONMONGERY SCHEDULE.

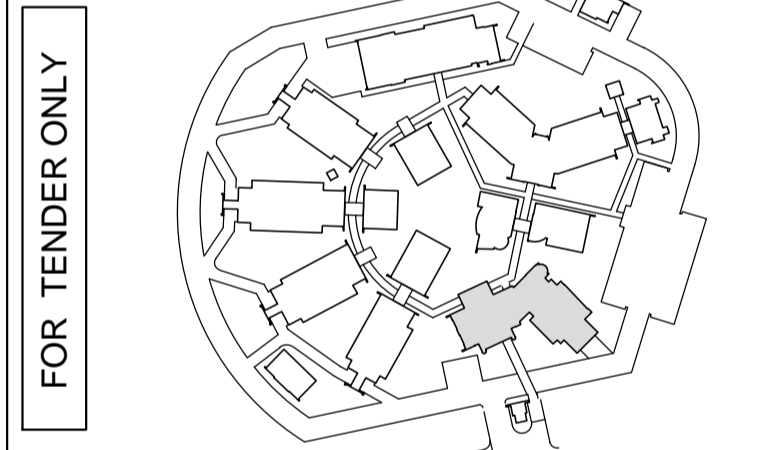
ALUMINIUM DOORS - SPECIFICATIONS

- All panes to be permanently marked by installer with glass code made clearly visible.
- SAFIERA Certificate of Performance rating for each door type to be submitted.
- All doors to comply with SANS 1263-1 for security and safety specifications and with SANS 10137 for installation of glazing specifications.
- All doors to comply with SANS 613-2009 for air infiltration, water penetration and structural strength specifications.
- All external doors to be fitted with a rubber compressible strip seal all around the frame.
- All external doors to be externally fitted with a draught protection fitting at the bottom edge of each leaf comprising of an aluminium carrier with EPDM wipe seal.

ALL DIMENSIONS TO BE CHECKED ON SITE BEFORE THE COMMENCEMENT OF WORK.



DOOR No:	D38	D39	D2, D7, D36	D3, D28	D4
QUANTITY REQUIRED:	TOTAL: 1 LH: 0 RH: 0 DOUBLE: 1	TOTAL: 1 LH: 1 RH: 0 DOUBLE: 0	TOTAL: 3 LH: 2 RH: 1 DOUBLE: 0	TOTAL: 2 LH: 0 RH: 2 DOUBLE: 0	TOTAL: 1 LH: 0 RH: 1 DOUBLE: 0
FRAME:	45x45x2mm HEAVY DUTY ALUMINIUM FRAME TYPE FT4000. ANCHORED TO BRICKWORK	45x45x2mm HEAVY DUTY ALUMINIUM FRAME TYPE FT4000. ANCHORED TO BRICKWORK	1,6mm SINGLE REBATED STEEL FRAME FOR 220mm THICK WALL	1,6mm SINGLE REBATED STEEL FRAME FOR 110mm THICK WALL	1,6mm SINGLE REBATED STEEL FRAME FOR 220mm THICK WALL
FRAME FINISH:	POWDER COATED BLACK	POWDER COATED BLACK	ONE COAT METAL PRIMER, ONE COAT UNIVERSAL UNDERCOAT AND TWO COAT GLOSS ENAMEL PAINT.	ONE COAT METAL PRIMER, ONE COAT UNIVERSAL UNDERCOAT AND TWO COAT GLOSS ENAMEL PAINT.	ONE COAT METAL PRIMER, ONE COAT UNIVERSAL UNDERCOAT AND TWO COAT GLOSS ENAMEL PAINT.
DOOR:	STANDARD ALUMINIUM DOUBLE DOOR WITH 45mm WIDE HEAVY DUTY ALUMINIUM SECTIONS AND GLAZING INFILL	ALUMINIUM DOOR WITH 45mm WIDE HEAVY DUTY ALUMINIUM SECTIONS AND ALUMINIUM INFILL PANELS.	40mm SOLID CORE FLUSH PANEL DOOR WITH 3,2mm HARDBOARD COVERING ON BOTH SIDES AND CONCEALED EDGES HUNG ON STEEL FRAME.	40mm SOLID CORE FLUSH PANEL DOOR WITH 3,2mm HARDBOARD COVERING ON BOTH SIDES AND CONCEALED EDGES HUNG ON STEEL FRAME.	40mm SOLID CORE FLUSH PANEL DOOR WITH 3,2mm HARDBOARD COVERING ON BOTH SIDES AND CONCEALED EDGES HUNG ON STEEL FRAME.
DOOR FINISH:	POWDER COATED BLACK	POWDER COATED BLACK	SAND PAPERED, SEALED, PRIMED, 3 COATS OF GLASS ENAMEL PAINT, COLOUR TO CLIENT APPROVAL	SAND PAPERED, SEALED, PRIMED, 3 COATS OF GLASS ENAMEL PAINT, COLOUR TO CLIENT APPROVAL	SAND PAPERED, SEALED, PRIMED, 3 COATS OF GLASS ENAMEL PAINT, COLOUR TO CLIENT APPROVAL
HINGES:	No 6 OF AS FLUSH HINGE 4"x3"x2mm (HNFL-403020-SAA).	No 3 OF AS FLUSH HINGE 4"x3"x2mm (HNFL-403020-SAA).	No 3 OF SS 2BB BUTT HINGE EN1935GRD13 (JH-BB-STD-2-SS).	No 3 OF SS 2BB BUTT HINGE EN1935GRD13 (JH-BB-STD-2-SS).	No 3 OF SS 2BB BUTT HINGE EN1935GRD13 (JH-BB-STD-2-SS).
GLAZING:	3+3mm THICK LAMINATED SAFETY GLASS PANE.	PANEL: No 2 OF MIN 25mm ALUMINIUM PANEL POWDER COATED BLACK FINISH WITH MIN 26mm R1610 POLYURETHANE INSULATION IN BETWEEN.	No 3 OF SS 2BB BUTT HINGE EN1935GRD13 (JH-BB-STD-2-SS).	No 3 OF SS 2BB BUTT HINGE EN1935GRD13 (JH-BB-STD-2-SS).	No 3 OF SS 2BB BUTT HINGE EN1935GRD13 (JH-BB-STD-2-SS).
EXTERNAL SILL:	186x55mm P.C. THRESHOLD TYPE: WATCRETE, CODE: TA	186x55mm P.C. THRESHOLD TYPE: WATCRETE, CODE: TA	NIL	NIL	NIL
IRONMONGERY:	No 1 PAIR 400mm PULL HANDLE BACK TO BACK (S206BBS), SOLENOID LOCK W/OUT CYL 25mm (L-4040001), No 1 OF CYLINDER PROFILE GMK (2x19SCGMK), No 2 OF ALUMINIUM FLUSH BOLT BY DOOR MANUFACTURER AND No 1 OF DUST PROOF STRIKE (8852SC).	PAIR OF SANDPIPER S S LEVER HANDLE ON ROSE (6104-06SS), 66mm EURO PROFILE KNOB CYLINDER (2x15NPMK), NARROW STYLE EURO PROFILE CYLINDER UPRIGHT LOCK CASE (76611SS).	No 1 PAIR DOVE ON PLATE PROFILE (AL6066-05AS), No 1 OF UNION 315 DOOR LOCK SS (L-22115-76SS), No 1 OF CYLINDER PROFILE GMK (2x18SCGMK) AND No 2 OF KICK PLATE 300x80x2mm WORKS (AL5089-300W).	No 1 PAIR DOVE ON PLATE PROFILE (AL6066-05AS), No 1 OF UNION 315 DOOR LOCK SS (L-22115-76SS), No 1 OF CYLINDER PROFILE GMK (2x18SCGMK) AND No 2 OF KICK PLATE 300x80x2mm WORKS (AL5089-300W).	No 1 PAIR DOVE ON PLATE PROFILE (AL6066-05AS), No 1 OF UNION 315 DOOR LOCK SS (L-22115-76SS), No 1 OF CYLINDER PROFILE GMK (2x18SCGMK).
DOOR LATCH:	NIL	NIL	NIL	NIL	NIL
DOOR CLOSER:	No 1 OF UNION DC 737 EN3-5 SC HO (737SCHO).	NIL	No 1 OF FLOOR DOOR STOP SATIN SS (87001SS)	No 1 OF FLOOR DOOR STOP SATIN SS (87001SS)	No 1 OF FLOOR DOOR STOP SATIN SS (87001SS)
DOOR STOP:	NIL	No 1 OF FLOOR DOOR STOP SATIN SS (87001SS)	No 1 OF FLOOR DOOR STOP SATIN SS (87001SS)	No 1 OF FLOOR DOOR STOP SATIN SS (87001SS)	No 1 OF FLOOR DOOR STOP SATIN SS (87001SS)



REV	DATE	DESCRIPTION

THIS DRAWING IS COPYRIGHT OF TONDOLO PARTNERSHIP

TONDOLO PARTNERSHIP
 architects urban planners
 200 Bram Fischer Dr., Kensington B, Gauteng
 P.O. Box 822, Randburg, 2125
 tel: 011-789 4296 fax: 011-789 4772
 e-mail: mwarcb @ mweb.co.za

NORTH WEST PROVINCIAL GOVERNMENT
 DEPARTMENT OF HEALTH

PROPOSED NEW COMMUNITY HEALTH CENTRE IN MATLOSANA

UNIT	MAIN RECEPTION AND ADMINISTRATION - UNIT 5	
WORKING DRAWINGS	DOOR SCHEDULE - No 1	
SCALE	1:20	DATE 2015.03.20
PROJ NO	2011 / 44	REV DATE
DRAWING NO	W502	